

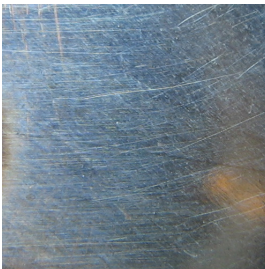
According to the Ordinance on Hazardous Substances, the Silver CF (chromate free) is classified as non-toxic or, according to GHS / CLP, as not acutely toxic and is therefore not subject to the Chemicals Prohibition Ordinance. Silver CF can also be safely used by pregnant or nursing women under the normal safety conditions.

The test acid Silver CF can be applied to the test object as well as by means of a bar test on a touchstone. **In the presence of silver** (pure silver, silver alloys, silver-plated surfaces) **the drop turns white after a few seconds or the line on the touchstone overlaps with a well visible white surface.**

Decisive is the resulting turbidity of the drop or the white coating on the test line.

Application examples:

Fine silver band 99.99%
before the application.



The silver CF is straight
upset.



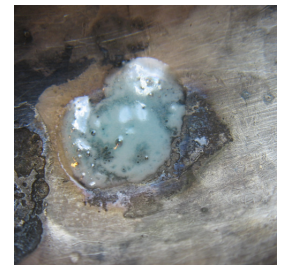
After a few seconds, the drops of
silver CF are clouding.



Silver plated spoon.
The surface is through
many tests already
clear attacked.



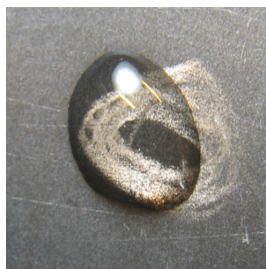
After only a few seconds a
greenish cloudiness is
visible. The green tone
results from the material
(copper) under the silver
plating.
If the surface would not had
been damaged just a white
cloudiness had been set.



Bar sample on touchstone.
The stroke was made of circular
movements.



The Silver CF is straight
upset.



After a few seconds the
stroke is coated by one
clearly visible, white
covering (turbidity).

