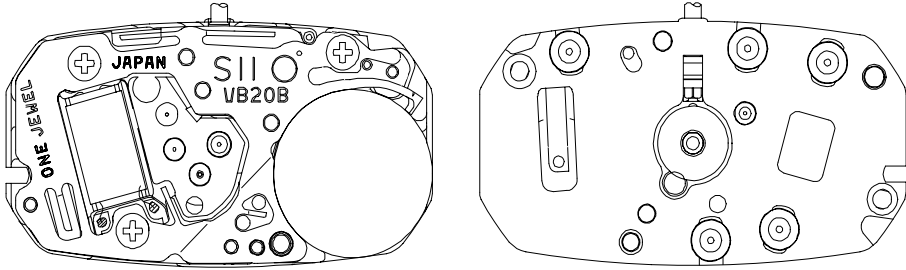


**TECHNICAL GUIDE
&
PARTS CATALOGUE**

Cal. VB20B

ANALOGUE QUARTZ

SII Products

Item		Cal. No.	VB20B
Movement (Appearance)			
Movement size	Outside diameter		15.55 mm : between 12 o'clock and 6 o'clock sides 8.45 mm : between 3 o'clock and 9 o'clock sides
	Casing diameter		15.15 mm : between 12 o'clock and 6 o'clock sides
	Total height		2.38 mm (including the battery)
Time indication			2 Hands (Move at 20-second intervals)
Driving System			Step motor (Fixed-width pulse system type)
Additional mechanism			Electronic circuit reset switch
Loss/Gain (Monthly rate) Frequency of crystal oscillator			Less than 20 seconds at normal temperature range 32,768 Hz
Operational temperature range			-5°C ~ +50°C
Regulation system			Nil
Measuring gate by quartz tester			Use 10-second gate
Battery			SR521SW (Silver oxide battery) Battery life is approximately 3 years Voltage : 1.55V
Jewels			1 Jewel

Disassembling procedures Figs. ① ⇒ ②⑥
Reassembling procedures Figs. ②⑥ ⇒ ①

Lubricating : Types of oil

Oil quantity



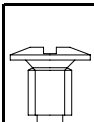
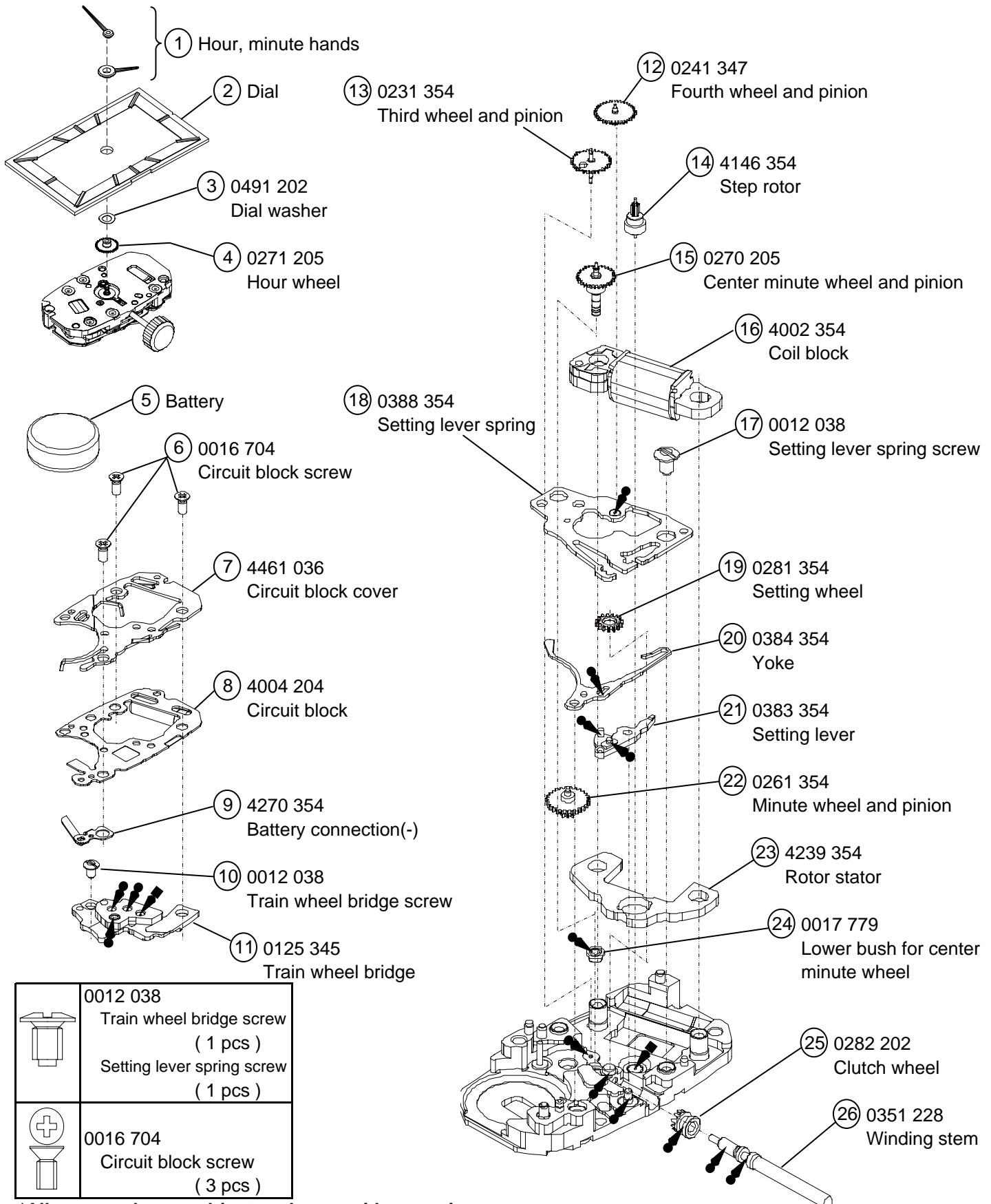
Moebius A



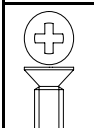
Moebius F



Normal quantity



0012 038
Train wheel bridge screw
(1 pcs)
Setting lever spring screw
(1 pcs)

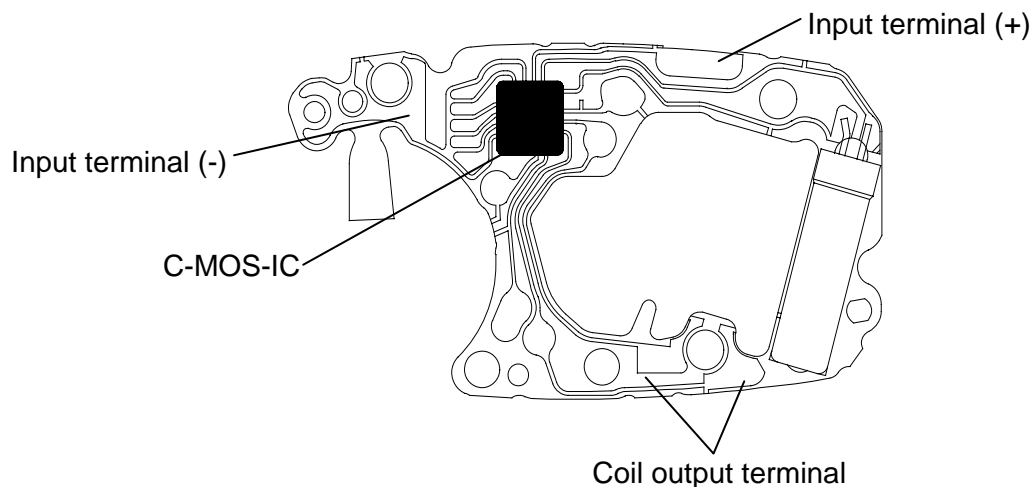


0016 704
Circuit block screw
(3 pcs)

***All parts code are subject to change without notice.**

•The explanation here is only for the particular points of Cal.VB20B

1.STRUCTURE OF THE CIRCUIT BLOCK

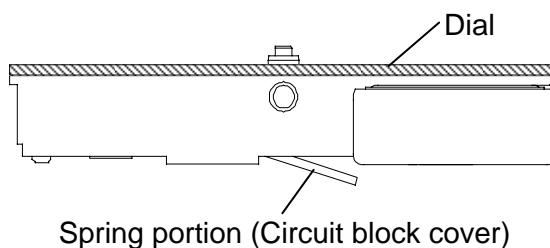


2.REMARKS ON DISASSEMBLING AND REASSEMBLING

① Hands

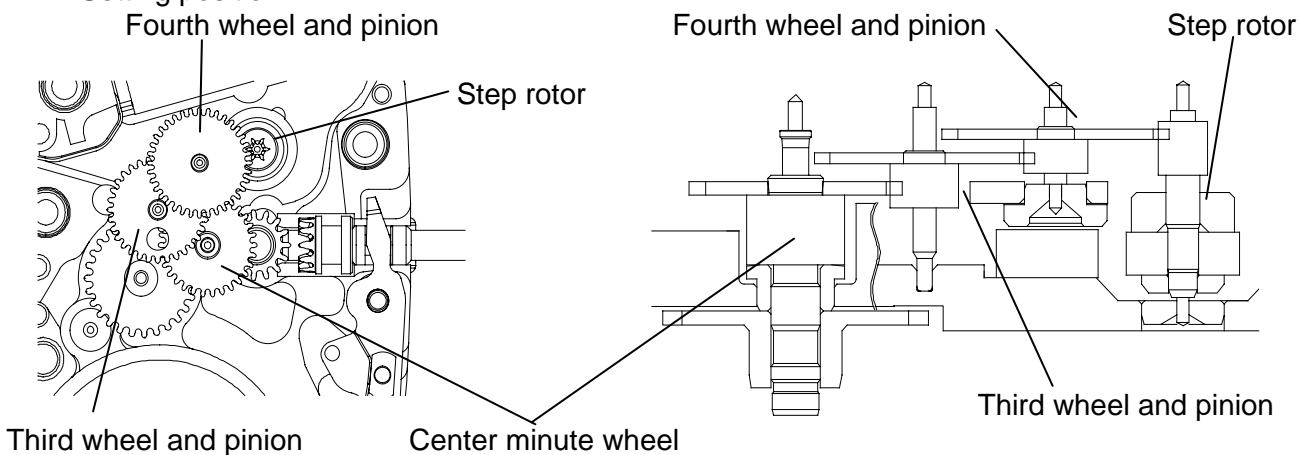
< How to install >

Place the movement directly on a flat metal plate or the like to install the hands. In doing so, make sure that the spring portion of the circuit block cover is not pressed.



⑭ Train wheel bridge

< Setting position >



②⑤ Winding stem 0351 208 (Φ 80) / 0351 228 (Φ 90)

The type of Winding stem is determined based on the design of case.

3.VALUE CHECKING

Coil block resistance 1.8kΩ~ 2.0kΩ

Current consumption

For the whole of the movement Less than 0.6μA